

Thinking photography

Capturing the subject, making the moment

Composition

Framing



Composition

Framing



Composition

Framing

Fill the frame with the subject
Natural or man-made structures
Light and shadow



Composition

Framing

Imagine the photograph on your wall or published in a magazine or book...



Composition

Framing

Zoom to capture the subject
Landscape and portrait
Rule of thirds



Composition

Rule of thirds

Imagine the scene divided into thirds by a grid...



Composition

Rule of thirds

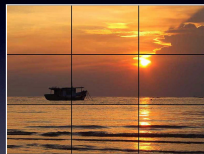
The grid allows you to carefully place the subject matter of the photograph



Composition

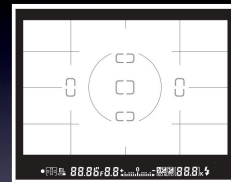
Rule of thirds

This method allows you to avoid "bulls eye" composition in your photographs



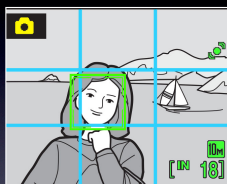
Composition

Many digital cameras allow you to display a grid in the viewfinder



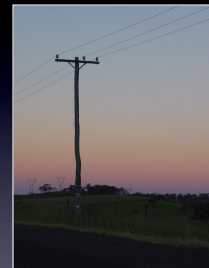
Composition

Many digital cameras allow you to display a grid in the viewfinder



Composition

Rule of thirds



Composition

Rule of thirds



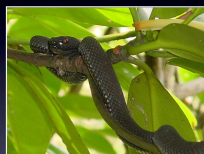
Composition

Rule of thirds



Composition

Rule of thirds



Composition

Angle



Composition

Angle



Composition

Colour



Composition

Colour



Composition

Colour



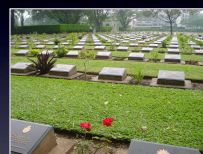
Composition

Colour



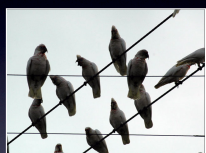
Composition

Pattern



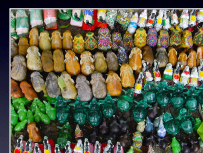
Composition

Pattern



Composition

Pattern



Composition

Pattern



Composition

Perspective



Composition

Perspective



Composition

Perspective



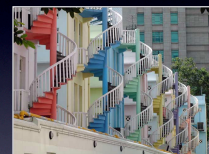
Composition

Shape



Composition

Shape



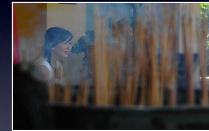
Composition

Shape



Depth of field

Shallow depth of field
Telephoto long zoom



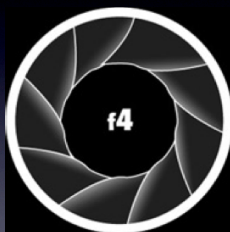
Depth of field



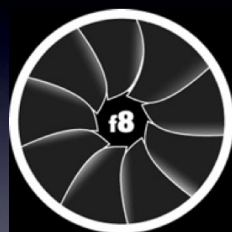
Depth of field



Lower f-numbers indicate larger apertures
Higher f-numbers indicate smaller apertures



Shallow depth of field



Deep depth of field

Lighting



Lighting



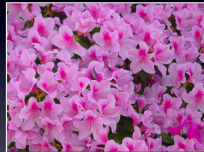
Lighting

Incorrect white balance setting.
An external shot with an indoor
white balance setting.



Lighting

Correct white balance



Lighting

Incorrect white balance setting.
An internal shot with an
outdoor white balance setting.

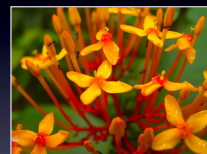


Lighting

Correct white balance yet still
over-exposed.



Macro



Macro



Macro



Macro



Macro



People



People



People

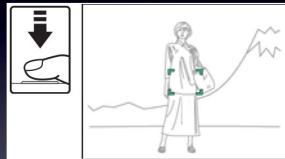


People



Focus Lock

Point
Focus



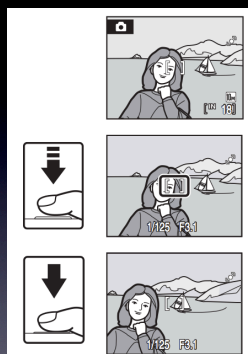
Focus Lock

Re-frame
Shoot



Focus Lock

Point
Focus
Re-frame
Shoot



Shutter Speed

A fast shutter speed lets through
less light



Shutter Speed

A fast shutter speed can "freeze" the action



Shutter Speed

A slow shutter speed can reveal the "art" and direction of motion



Shutter Speed

A slow shutter speed can reveal the "art" and direction of motion



Shutter Speed

A slow shutter speed in tandem with a tripod can result in dynamic night shots



Shutter Speed

Leaving the shutter open for 10 seconds or more together with a wide aperture will enable you to catch lightning



Telephoto



Telephoto

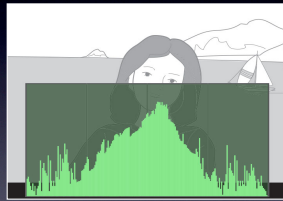


Telephoto



Histogram

Rule of thirds



A histogram towards the left side results when the overall image is dark. A histogram that is too far to the left may result in "black out" of the dark areas of an image.



A histogram towards the right side results when the overall image is light. A histogram that is too far to the right may result in "white out" of the light areas of an image.



An overall well-balanced histogram results when the overall image is at optimal lightness.



Bracketing

Exposure #1



Bracketing

Exposure #2



Bracketing

Exposure #3



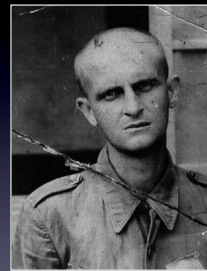
Retouching



Retouching



Retouching



Retouching



Retouching

A



Retouching

+ B



Retouching

= C



Retouching



Retouching

