

Working with Photoshop CS5

Gather together your resources and backup your images

Upload your digital still images from your digital camera to the computer. This action will vary from camera to camera and from one Mac or PC to the next. Some users will need to install software that comes with the camera. This software will sometimes automatically launch when the camera is connected to the Mac or PC. Application launch may also occur when an image storage media card is inserted into the appropriate slot on a Mac or PC notebook

I avoid using the software that comes with the camera (with a couple of exceptions). I also avoid using Apple's iPhoto software. Upgrade your system software on the Mac and chances are you will lose access to all your digital photographs. This is a disaster if you have not backed up your digital images. If you wish to use software to organise and categorise your images then turn to iView Media Pro on the Mac and ACDSee or Picaso on the PC. Adobe also offer image organising software.

Perhaps your camera will appear on your computer as an additional hard drive or as an additional volume called "Removable media" or "Untitled". You can then simply drag the images from that volume, directory or folder to an appropriate folder on your Mac or PC. It may be wise to purchase a small card reader that plugs directly into the USB slot of your PC. Many PCs running Windows XP, Vista or Seven, as well as Apple Macintosh computers running OSX, will automatically recognise digital cameras and card readers as an additional drive without the need to install camera-specific 'driver' software.

Regardless of which method you use it is **wise to backup your images**. You may edit an image and find that you prefer to return to the original image and restart from scratch. You may not be able to do this if you have not preserved a backup.

Workshop Resources

Normally the digital images that you will need to work with during this workshop will be available to you on the computer with which you are working. They may also be available on CD-ROM or thumb-drive.

In the event that neither of these options is available to you the materials are also available at the following web site. The resources can be accessed from this Internet address. Click on the Workshop link for Digital Photography.

<http://www.larkin.net.au/>

Launch Photoshop

Locate the Photoshop application in the Program menu on your PC. Launch the program. Locate and open the image named "spider.jpg" within the "Digital Workshop Resources" folder on your PC. The most likely location is the Desktop or the "D" drive.

- **Menu: File > Open...**

The following image should open.



Crop an Image

Your next activity will be to crop an image. When you crop an image you eliminate areas around the image that you no longer require. There may be elements near the border of the image that spoil the overall look and feel of the image. You can eliminate these elements with the Crop tool.

Locate and open the image named "spider.jpg" within the "Digital Workshop Resources" folder on your PC. The most likely location is the Desktop or the "D" drive.

- **Menu: File > Open...**

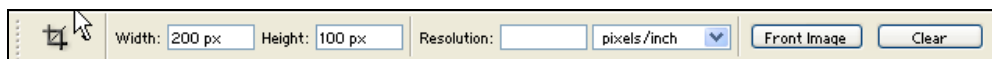
The following image should open.



This image is not too bad but a simple crop will provide more impact if we shift the spider from the centre to the centre left with a simple crop. How? Select the Crop Tool from the Toolbox. It looks like this:



The Options bar will look like this. We can crop and resize this image at the same time with a little skill. How?



- Make sure the **drop down menu** on the Options bar states "pixels/inch".
- Enter 640 for Width
- Enter 480 for Height
- Enter 72 for Resolution
- **Drag the Crop Tool** across the image so that selected portion shows the spider at centre left
- Once you are happy with the selection **double click the mouse**; this will crop the image
- Save your work. **File > Save**

Your image should look a little like this:



Why Crop an image?

1. Alter the emphasis upon the subject of the photograph.
2. Remove unwanted elements around the border or outside edges of the image (Lighting poles, walls, shadows, people, buildings, etc)
3. Resize the image.

Rotating Images

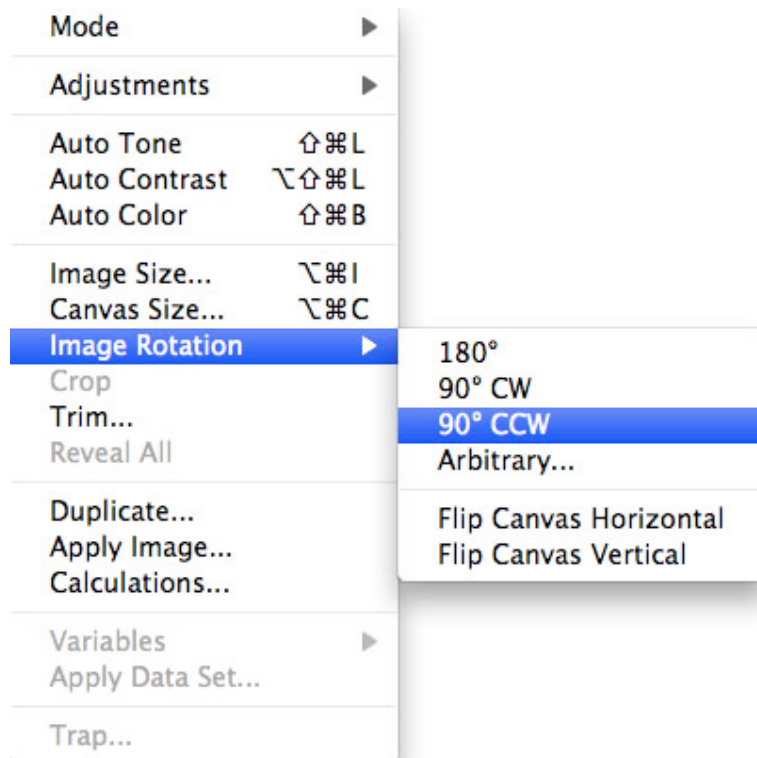
Locate and open the image named "hong_lim.jpg" within the "Digital Workshop Resources" folder on your PC. The most likely location is the Desktop or the "D" drive.

As you can see the image is not correctly aligned. You will need to rotate the image counter clockwise 90°.



Follow these steps:

- **Go to and select the menu: Image > Image Rotation > 90° CCW**



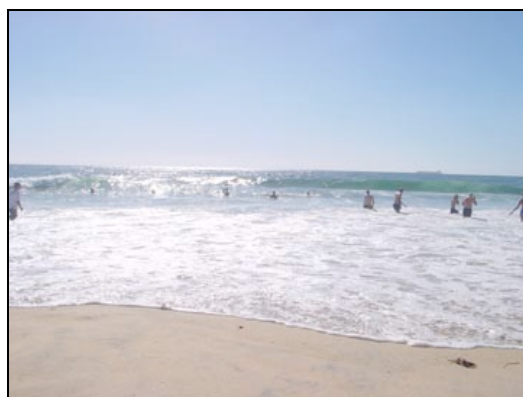
The image will be rotated to the correct vertical.

Brightness and Contrast

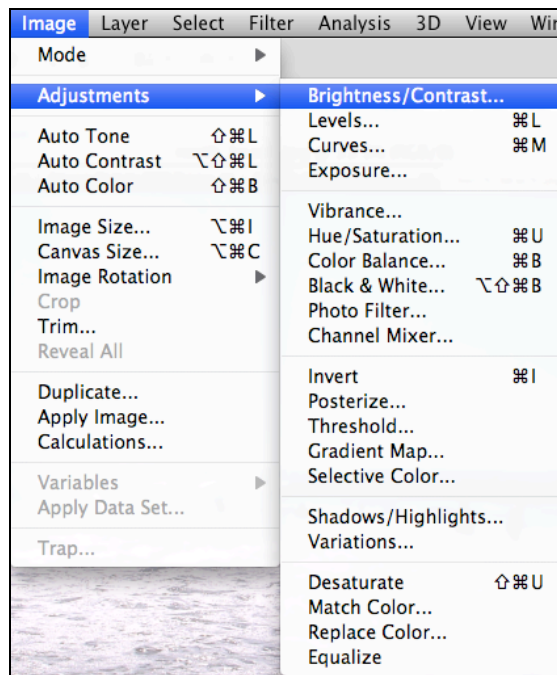
Occasionally digital images will appear washed out or it may be too light or too dark. Applying a little brightness and contrast can work wonders with such an image. Photoshop allows you to adjust the brightness and contrast of your image. Locate and open the image named "north_beach.jpg" within the "Digital Workshop Resources" folder on your PC. The most likely location is the Desktop or the "D" drive.

- **Menu: File > Open...**

The following image should open.



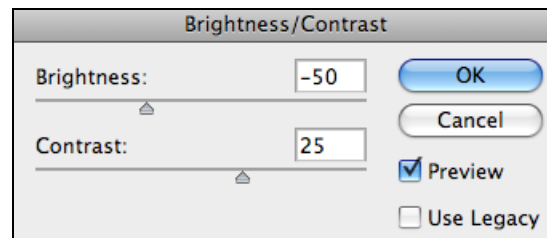
- **Go to and select the menu: Image > Adjustments > Brightness/Contrast...**



The dialogue box at right should appear.

Simply experiment with Brightness and Contrast settings in the dialogue box till you are satisfied with the results.

- When you have finished click “**OK**” and you are done.
- Save your work. **File > Save**.



Converting a colour image to black and white

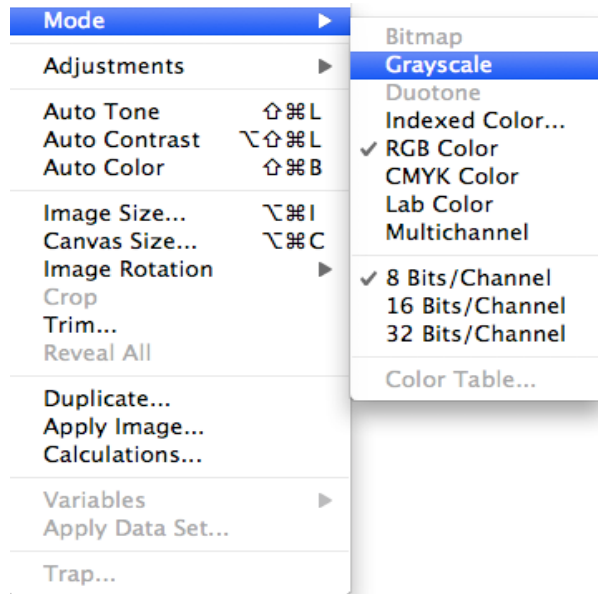
There may be instances when a simple “black and white” image is all you need for your project. This can be an advantage for you as black and white images are smaller in file size in comparison to full colour images. How to achieve this? Locate and open the image named “aircraft.jpg” within the “Digital Workshop Resources” folder on your PC. The most likely location is the Desktop or the “D” drive.



Follow these steps:

- Go to and select the menu: **Image > Mode > Grayscale**

- Click **OK** when the following dialogue box appears:



The image will now appear to be a "black and white" photograph. **Note:** you can also use "Desaturate" from the Image menu to remove the colour from an image yet it will retain the properties of a colour image. The Desaturate menu item will be discussed below.

Making a photograph appear 'black and white'

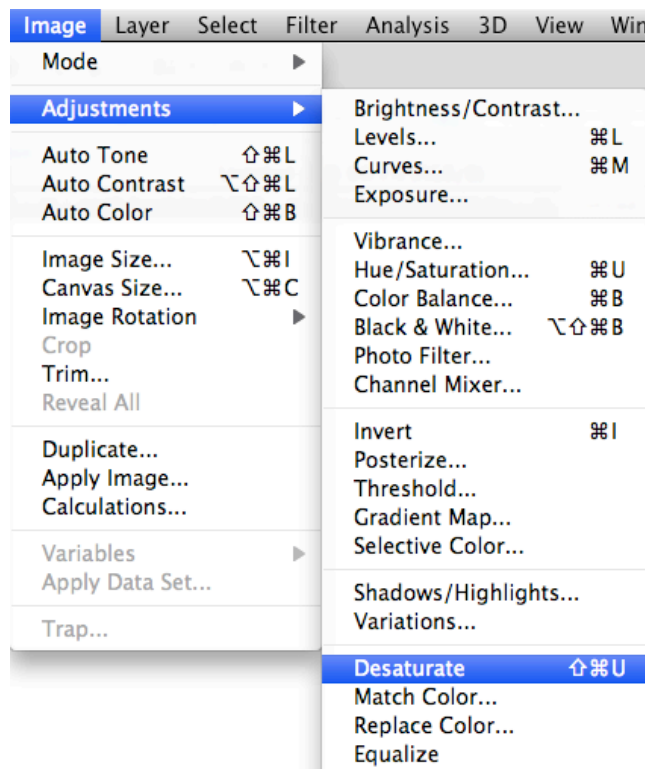
It is possible to make a photograph appear black and white yet retain its colour attributes.

Locate and open any full colour image on the Mac or PC. For example you may select this image:



Go to and select the Desaturate from the Adjustments. See below.

Menu: Image > Adjustments > Desaturate



Filters

There are **dozens** of filters within Photoshop. Filters can be applied to completely transform your image into a work of art, unrecognisable from the original digital photograph.

In this exercise we will look at the **Sharpen** and **Unsharp Mask** filters.

Locate and open the image named "lighthouse.jpg" within the "Digital Workshop Resources" folder on your PC. The most likely location is the Desktop or the "D" drive.

- **Menu: File > Open...**

The following image should open.



The snake is not focused well and the subject of the image appears blurred. You can sharpen the image in order to improve the quality of the photograph.

Select Sharpen from the **Filter** menu.

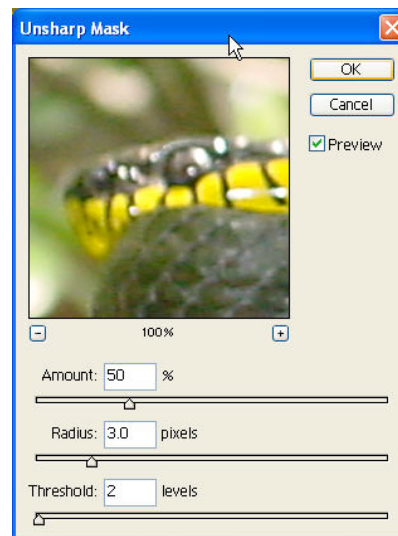
- **Menu: Filter > Sharpen > Sharpen**

If you are not impressed with the result then select:

- **Menu: Filter > Sharpen > Unsharp Mask...**

The dialogue box at right should appear.

- **Enter the following settings:**
 - Amount: 50%
 - Radius: 3.0 pixels
 - Threshold: 2 levels



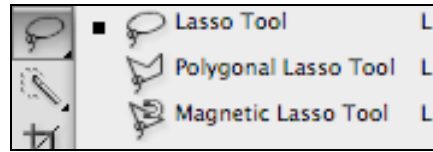
- When you have finished click "**OK**" and you are done. If you are still not satisfied then repeat the **Unsharp Mask** filter by simply selecting Unsharp Mask from the top of the Filter Menu.
- Save your work. **File > Save.**

Alternative approach to sharpening using the Blur filter

You could also select only the area around the snake's body and use the **Blur** filter to increase the blurring of the background scenery. This will make the snake appear 'sharp' as a result. How?

First of all you need to select the snake.

Select the Lasso Tool from the Toolbar.

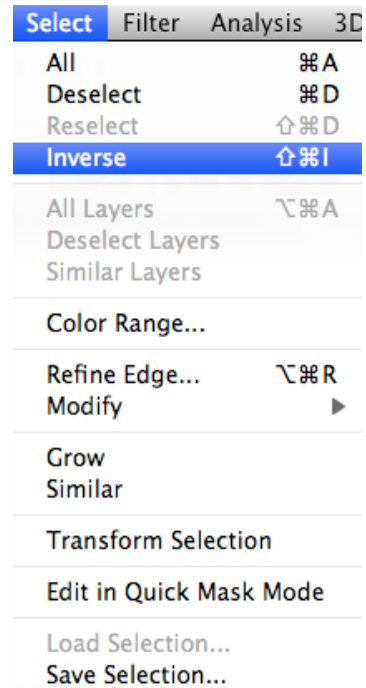


Carefully select the snake using the lasso tool. You can select one area or sequence at a time by holding down the option key and click-dragging carefully. You can also save your selection. Ask your instructor for advice.

Once you have selected the snake you need to **inverse** the selection so that **everything** in the image, **except the snake**, is selected. How?

Select **Inverse** from the **Select** menu

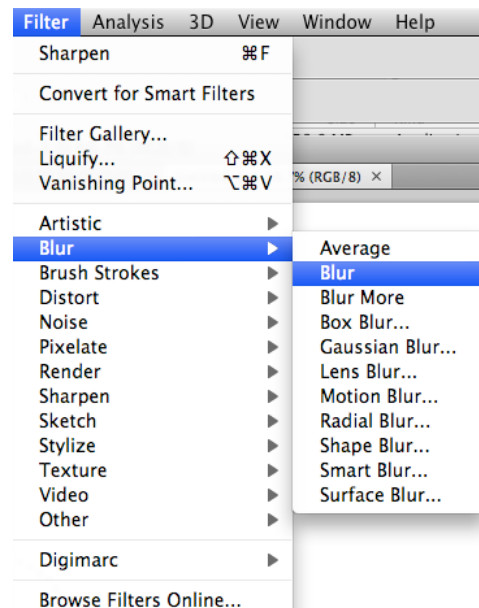
- **Menu: Select > Inverse**



Once you have completed that it is now time to Blur the area of the image that is now selected.

Select **Blur** from the **Filter** menu.

- **Menu: Filter > Blur > Blur**



If you are not impressed with the result you may like to repeat the Blur filter. You could then proceed to invert the selection once more and Use the Sharpen filter to add a more crisp effect to the snake.

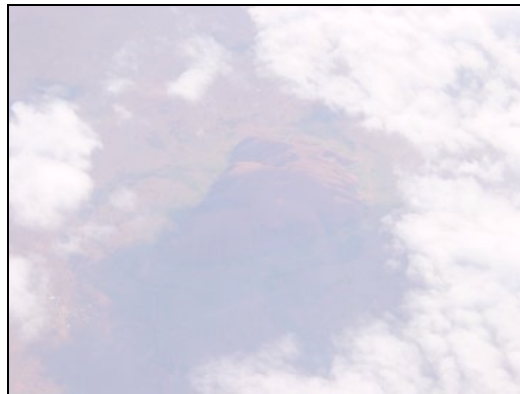
Levels

There will be times when the natural light of your image is harsh or simply washed out. You may have taken the digital photograph with inappropriate light or exposure settings. Perhaps you took the photograph through a bus or car window. There is a method you can also apply to adjust the appearance of your photograph. It is called adjusting levels.

Locate and open the image named "uluru.jpg" within the "Digital Workshop Resources" folder on your PC. The most likely location is the Desktop or the "D" drive.

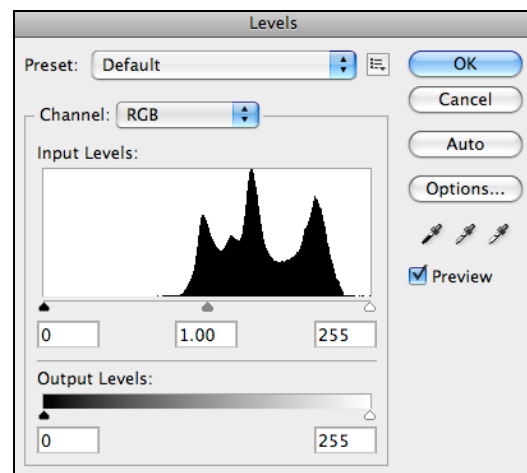
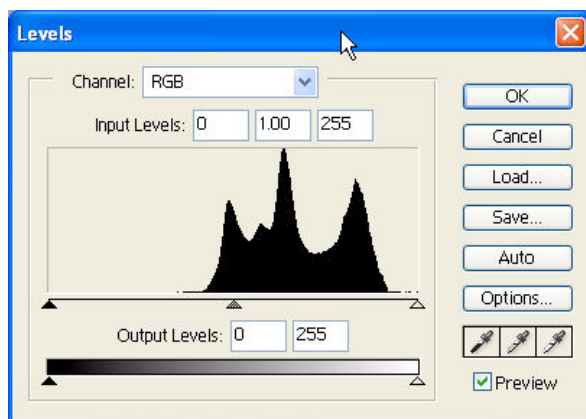
- **Menu: File > Open...**

The following image should open.



How can this image be improved? There is not an even distribution of colour and light in the image. It was taken through the window of a passenger jet. You could apply some brightness and contrast. You could also resize the image. Let's try adjusting the levels.

Go to and select the menu: Image > Adjustments > Levels...



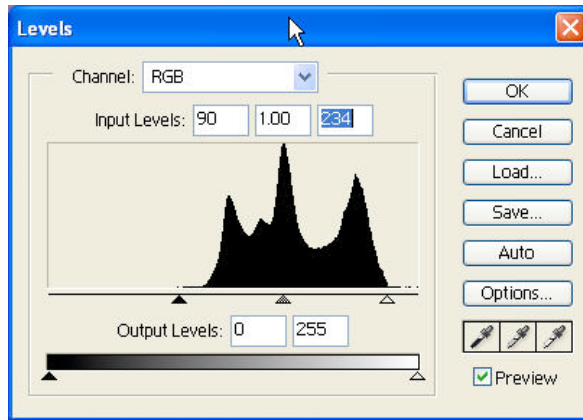
Windows

Macintosh

Drag the arrow on the far left of the diagram towards the right hand side. So that it is close to the peaks.

Drag the arrow on the far right of the diagram towards the left hand side. Just slightly, so that it is close to the right side of the peaks.

Move the centre slider arrow towards the centre of the peaks. The dialogue box may look like this:



Experiment with the sliders until you are happy with the results.



This image could also benefit from the use of the Unsharp Mask filter.

Correcting Horizons with a simple use of Rotate Canvas

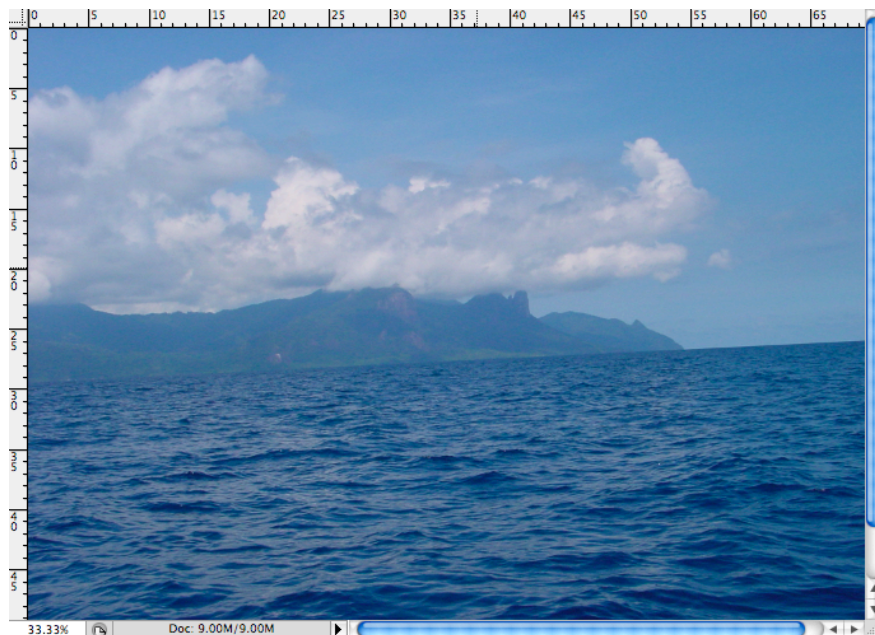
There will be times when you take a photograph and the horizon is not exactly on the level. A simple application of the “rotate canvas” menu item can rectify this problem.

Locate and open the image named “tiodan_02.jpg” within the “Digital Workshop Resources” folder on your PC. The most likely location is the Desktop or the “D” drive.

You will notice that the horizon is not level. When correcting the horizon it is wise to use guides. They can be placed on to the image display area by click dragging from the rulers that border the image in Photoshop.

From the View menu please check that the menu item “Rulers” is selected. You will see the rulers that border the image, as below.

- Select **Rulers** from the **View** menu.



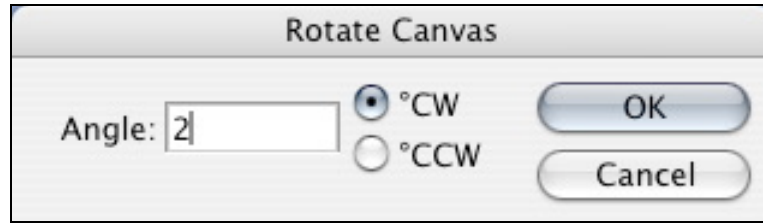
Click drag from the top ruler on to the image and a blue line will appear on the screen. Carefully drag the blue line till it is situated near the horizon. See below.



To correct the horizon you will need to rotate the image in a clockwise direction. The rotation will need to be adjusted by a few degrees.

- Select **Image Rotation > Arbitrary** from the **Image** menu.

You will see the following dialogue box.



Ensure that you have selected “CW” and entered a suitable value for the rotation. Perhaps 2 degrees will be suitable in this case. Let’s try.

The result is partly displayed below. The horizon is more level.



You can enter degrees in smaller measurements if you wish, such as 0.5 degrees.

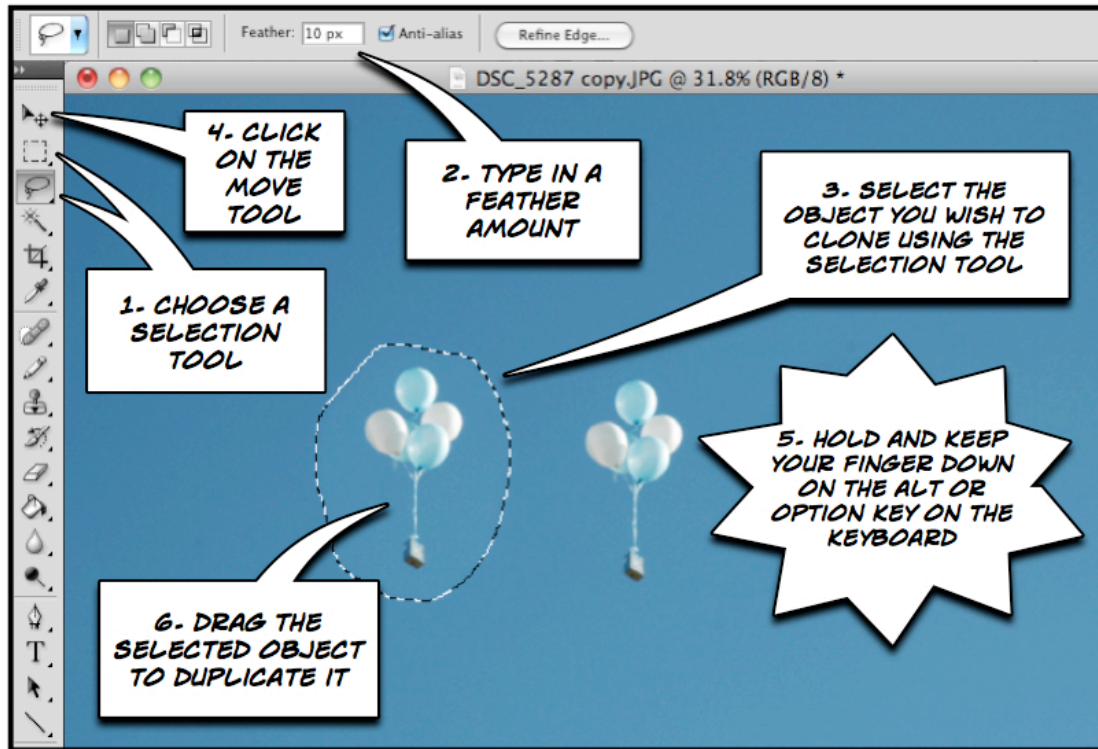
The surrounding border of the image is now offset due to the rotation of the entire canvas. See below. You can simply **crop** the image to correct this problem.



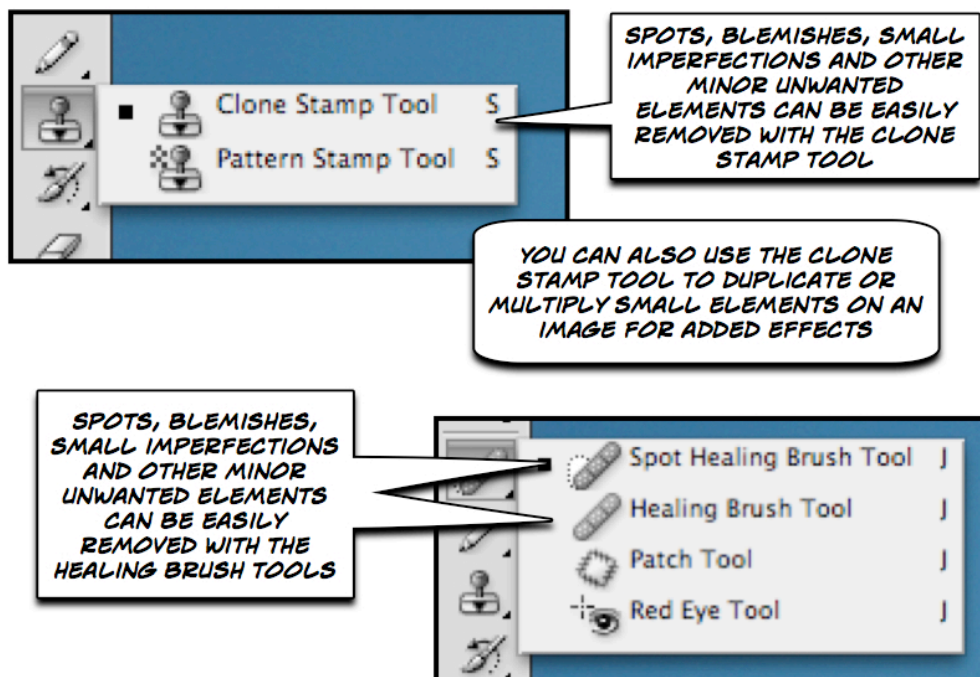
Cloning

It is possible to duplicate or multiply objects on an image by using a technique known as **cloning**. In short you simply “paint” one area of an image using the pixels from another part of the same or even a different image. There are several different methods.

One method simply involves selecting a particular area of an image with a selection tool and then “**option-dragging**” that selected area by then choosing the **Move tool** on the Toolbar and **dragging** the selected area with the mouse while **continuously holding down the option or alt key** at the same time. Practise makes perfect. See below.



Other methods include experimenting with the **Clone Stamp** or **Healing Brush** tools. They are excellent for removing pimples, spots and blemishes from faces. See below.

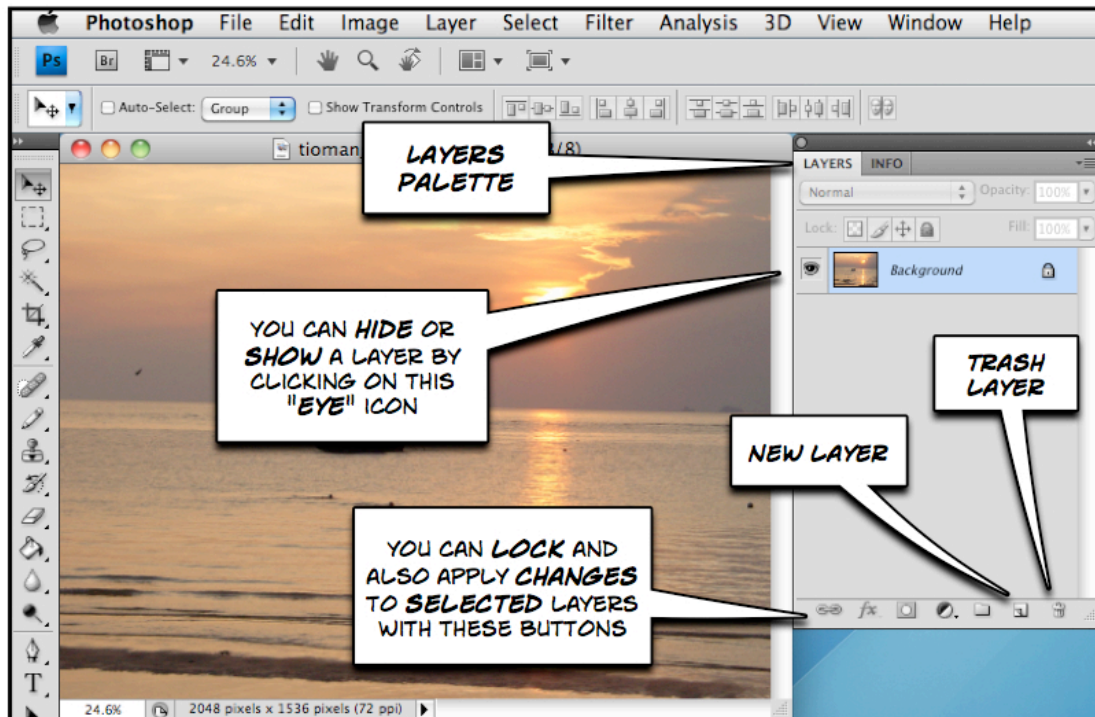


Working with layers

One of the most useful aspects of Photoshop is the use of layers. These enable you to create a series of working areas quite independent of one another so that you can try out a variety of ideas and methods as you modify your image.

Layers allow you to stack images or parts of images one upon another like layers in a cake or the floors of a building. In order to work on a particular layer you simply need to remember to select that specific layer on the layer palette.

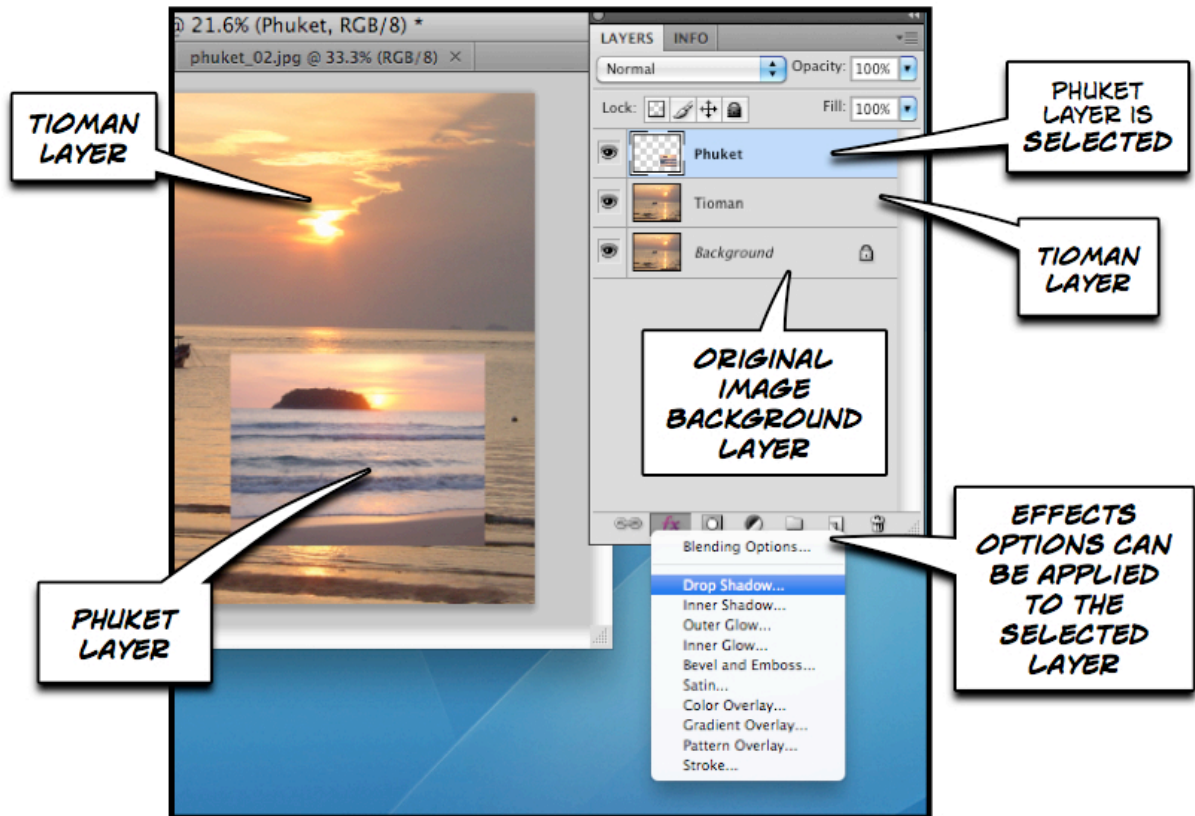
In order to view the Layers palette select **Layers** from the **Window** menu.



At the top of the Layers palette one can also adjust the visibility or opacity of selected layers. Selected layers can be modified using the options available from the buttons at the foot of the Layers palette. One can also create and delete layers.

Hints:

- It is a good idea to duplicate the background layer and work on the duplicate. **Right click** on the Background layer and select **Duplicate Layer** from the popup menu. The same applies to Layer 1 as well.
- Simply hide the layers you are not using and they can act as back-ups if you make a mistake you cannot recover from.
- You can apply different effects to different layers using the black and white circular effects button at the bottom of the layers window.
- Drag unwanted layers to the little trash can at the foot of the layers palette.



In the example above the Photoshop image now has three layers including the Background. The **Phuket** layer has been selected and an effects style will be applied to that selected layer. The **Phuket** layer is above or in the foreground with respect to the **Tioman** layer.

The image below illustrates that fact that image adjustments can be made directly from the Layers palette. One can also perform changes to layers using the dedicated Layers menu.

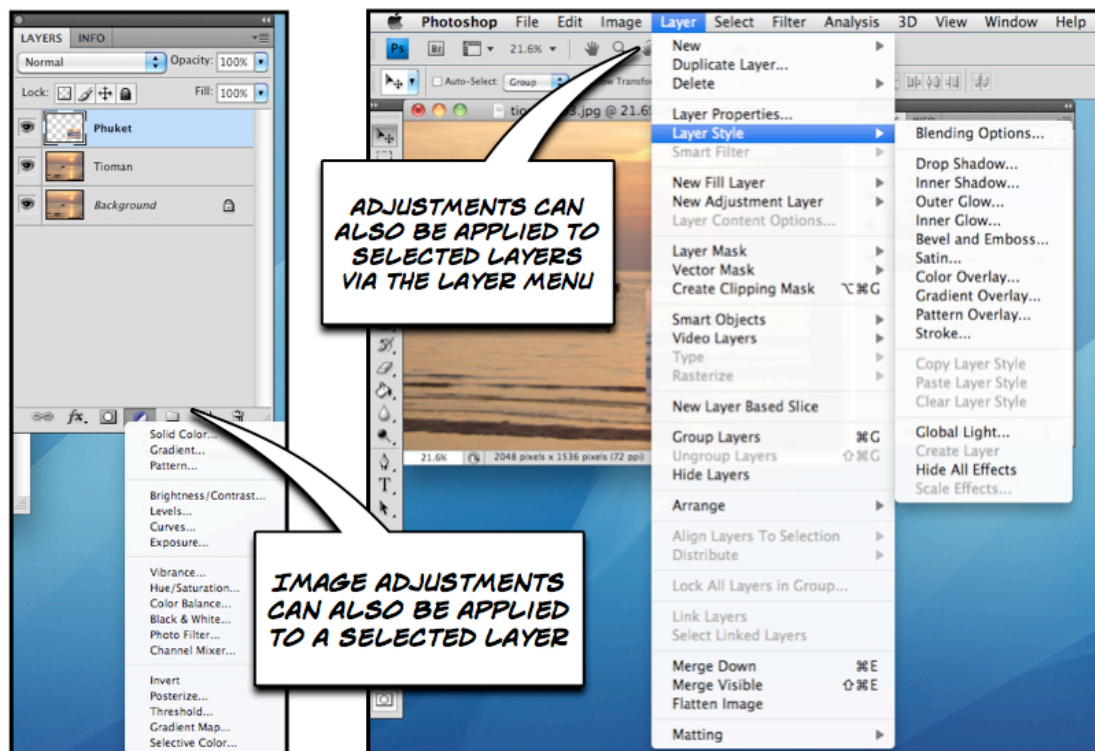


Image Resize

Different cameras create images of different sizes. The size of the image is also dependent upon the settings you have created on your camera.

In this case, when I refer to **size** I am concerned with the **dimensions** of the image, namely its **height** and **width**. For example, the two cameras that I use can produce images in a variety of dimensions:

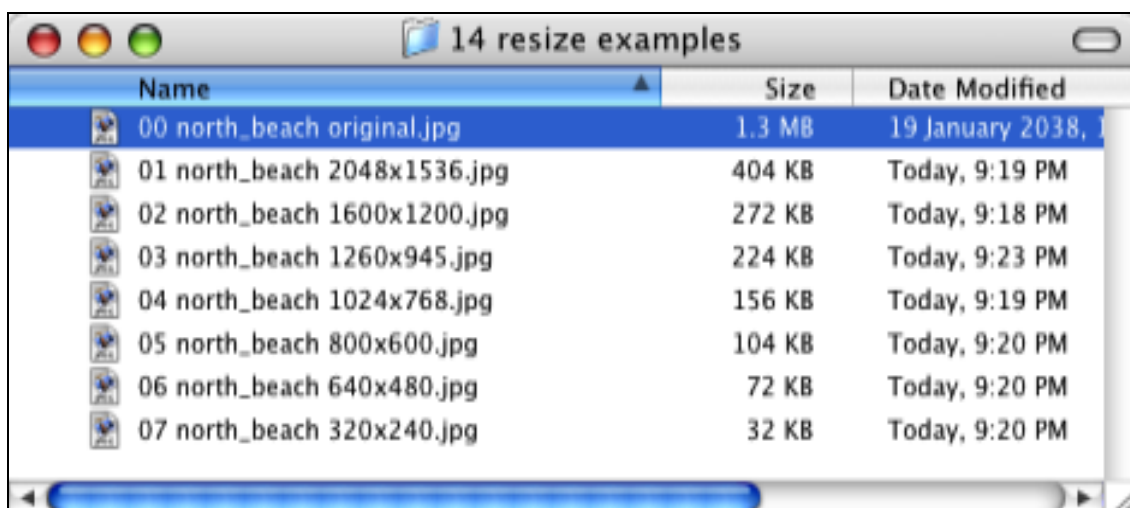
Sony DSC-70	Typical Use	Nikon D-70
2048 x 1536 pixels 1600 x 1200 pixels 1260 x 960 pixels 640 x 480 pixels 320 x 240 pixels	High quality print (38 x 25 cm*) High quality print (28 x 19 cm*) High quality print (28 x 19 cm*) Good quality print (19 x 13 cm*) Small print/Desktop Image PowerPoint or Word Image Email	3008 x 2000 pixels 2240 x 1488 pixels 1504 x 1000 pixels

*Approximate dimensions when printed at 200dpi (dots per inch on your printer)

I usually “capture” or take my digital photographs at the largest dimension so that, for want of a better expression, I have plenty of “data” to work with when I edit the photograph. I find that with a larger image you can create an amended photograph with excellent detail and clarity when you resize it for printing, inclusion in a document or hosting on the Internet.

As an aside, the higher the dimensions an image possesses the greater its **file size** will be in kilobytes. Look at the table below that shows the file size of the “north beach” digital photograph after it has been resized and resaved at a “High Quality” setting in the JPG file format.

Dimensions	File size (KB)	Typical Output or Use
2048 x 1536 pixels	1383 kilobytes	High Quality Photograph (original image 1.3MB)
2048 x 1536 pixels	404 kilobytes	High Quality Photograph
1600 x 1200 pixels	272 kilobytes	High Quality Photograph
1260 x 945 pixels	224 kilobytes	Medium Quality Photograph
1024 x 768 pixels	156 kilobytes	Desktop Image or PowerPoint inclusion
800 x 600 pixels	104 kilobytes	Desktop Image or PowerPoint inclusion
640 x 480 pixels	72 kilobytes	PowerPoint, Word, web or email document
320 x 240 pixels	32 kilobytes	Email, Word or web document

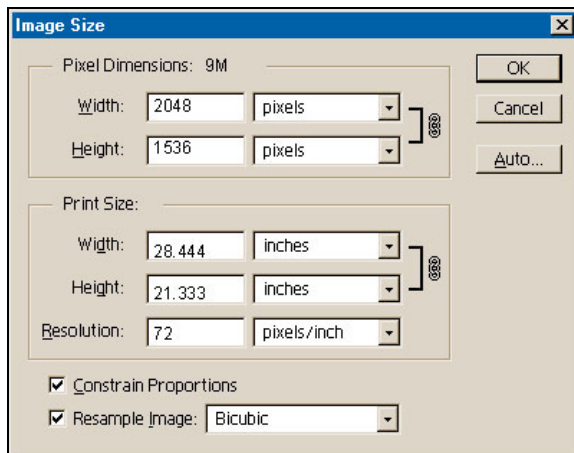




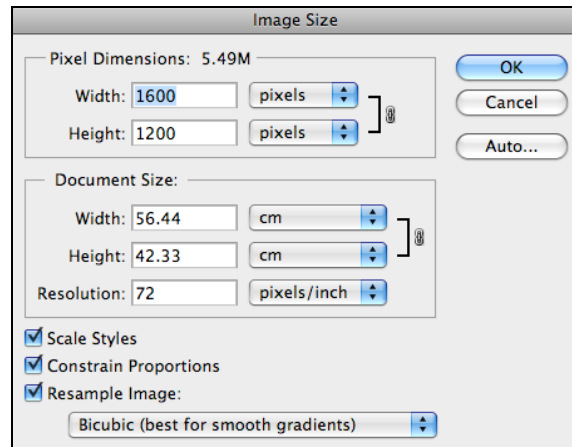
The “tioman.jpg” image is 2048 x 1536 pixels in size. Your task is to reduce its dimensions to 320 x 240 pixels.

- **Go to and select the menu: Image > Image Size...**

The following dialogue box should appear:



Windows



Macintosh

Now, your **Image Size** dialogue box may not have similar figures. *Do not panic*. Your dimensions may be indicated as inches, for example.

How? Simply select “pixels” for each of the drop down menus alongside the figures for “Width” and “Height”. The dimensions of 2048 (height) and 1536 (width) should appear.

- **Simply change the amount of 2048 pixels to 320 pixels**. The height should change automatically if the “Constrain Proportions” checkbox has been ticked at the bottom of the Image Size dialogue box.
- When you have finished click “**OK**” and you are done.
- Save your work. **File > Save**.

Why would you like to resize an image? Well, there are a number of reasons:

1. Images with large dimensions are also large in file size. The Tioman image before resizing is 1.2 megabytes. After resizing it is 20 kilobytes. An amazing reduction in size. It is easy for you to include this image in a document, PowerPoint presentation or an email.
2. Placement within a document. Do not simply import large images into a word document and then resize it. The file size of your document will be too large as all the original image data is retained.
3. Importing into PowerPoint. Do not simply import large images into a PowerPoint presentation and then resize it. The file size of your document will be too large as all the original image data is retained.
4. Emailing to a friend. What would your email recipient prefer? A 1mb or a 100k file?
5. Posting to the Internet. Keep the image a reasonable size so that download times are reduced.
6. Creating a desktop image.
- 7.

Saving in Different Formats

Photoshop can recognize and also save in many different image formats. Some of the formats and their file extensions are:

PSD: Photoshop Format: **PSD** files are Photoshop specific. Since they preserve layer and channel information, users can continually edit and adjust images using the PSD file.

JPEG or JPG: Joint Photographic Experts Group: **JPEG** files support full colour palettes; therefore, when saving photographic images to use on the Web, the best format is JPEG. A word of caution when using JPEG format: Every time a JPEG file is closed, the file recompresses; therefore, editing and adjusting should be done using the PSD file so image quality is not lost with multiple recompressions. You will save most of your digital images in this format.

GIF: CompuServe Graphic Interchange Format: **GIF** files are most commonly used for Web-based line art such as logos and buttons. Since this format can only support a maximum of 256 colours, GIFs are also popular for images that have only a few colours.

BMP: Bitmap: **BMP** files

TIFF: Tagged Image File Format: **TIFF** files

PNG: Portable Networks Graphic: **PNG** files are a relatively recent graphic format, designed for use on the web. However, not all web browsers recognize PNG files, so be aware of this if you are creating graphics for use on the web.

To save images in a different format simply select:

- **File > Save As...**

Photoshop Tutorials on the Internet

Virtual Training Help Centre at the Institute for Interactive Technology	http://iit.bloomu.edu/vthc/ps.html
Adobe Photoshop Basics: A Free Online Class	http://graphicssoft.about.com/library/course/bltps5out.htm
Adobe Photoshop Resources	http://graphicssoft.about.com/cs/photoshop/ht/

Digital Photography Tips and Tricks

General Digital Photography Tips and Techniques	http://graphicssoft.about.com/od/digitalphotography/
DigiCam Help	http://www.digicamhelp.com/topics/learn/
Photography Guide	http://www.photo.net/learn/
Photography Tips.Com	http://www.photographytips.com/